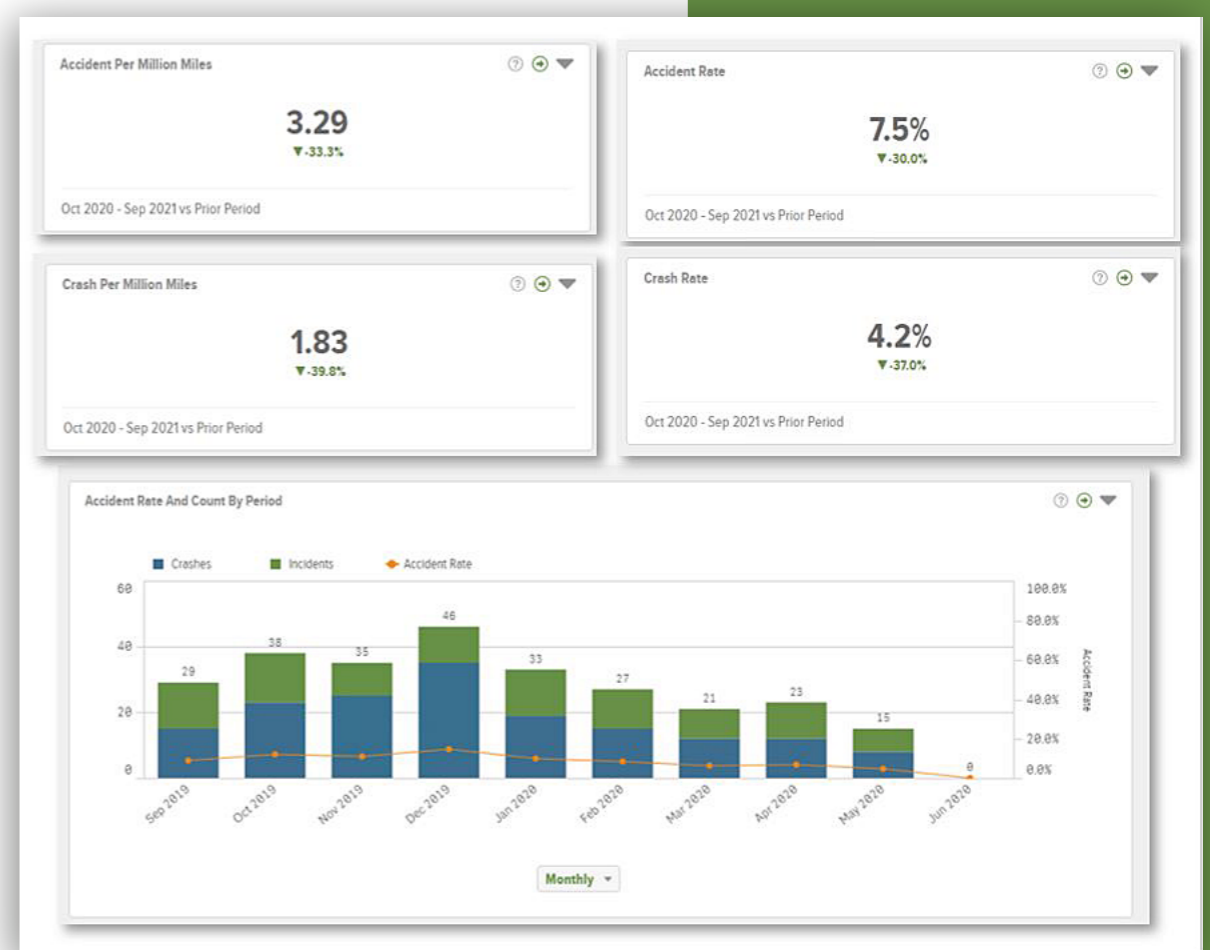


New Additions! FleetView Dashboards

Wheels is excited to announce the continued expansion of our interactive reporting tools. With robust filtering, individual vehicle-level visibility, and scheduling capability, our interactive dashboards contain important data and analytics to help you optimize your fleet.

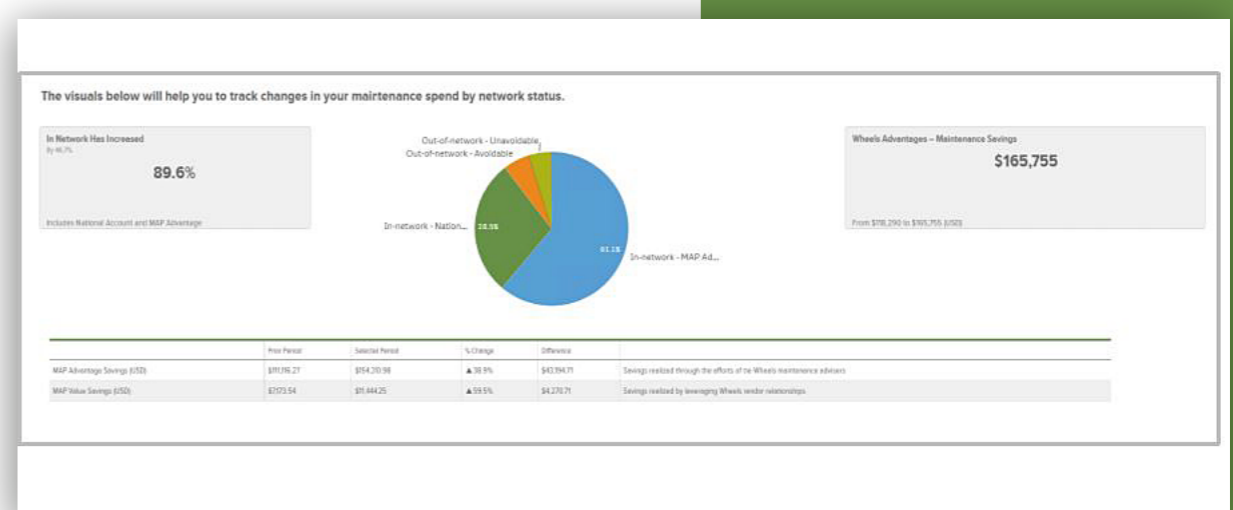
Accident Occurrences dashboard

- Monitor accident-related metrics, including crash rates and accidents per million miles
- Use accident trends, like time of day and accident driver role, to highlight opportunities to enhance your safety program or adjust your fleet policy
- Customize detailed accident reports to share with relevant stakeholders, such as Risk, HR, or your insurer



Maintenance Expense, Network Status dashboard

- Review savings generated through the Wheels MAP program
- Monitor drivers who opt to go out of network, focusing on the most frequent and costly offenders
- Compare costs by repair type across our extensive repair network



Expense dashboards

With the introduction of the two dashboards listed above, we are ready to fully transition from our legacy Expense Variance tool to our new Expense interactive dashboards. We are confident that you will find these new tools even more intuitive and robust than the last.

For quick access, the Expense Variance links in the FleetView main menu will now take you to the Expense Summary dashboard.

Expense Variance is still accessible through the 'Legacy Expense Variance' button in the Legacy Reports section of the Reporting Center until the end of November.

Helpful Resources

User guides for all these new dashboards are posted in the FleetView Help Center. A member of your Wheels Account Team can help you set up new report schedules or configure reports.

Please reach out to a member of your Wheels Account Team with any questions or send feedback to FleetViewFeedback@Wheels.com. We'd love to hear what you think!